

# PERFORMANCE SEASON

PERFORMANCE ART DIDACTIC FESTIVAL  
SPECIAL WEB EDITION 09 / 10



The Grossi Maglioni Magic Duo  
in collaboration with Vision Forum and KSM Linköpings Universitet - Sweden  
presents

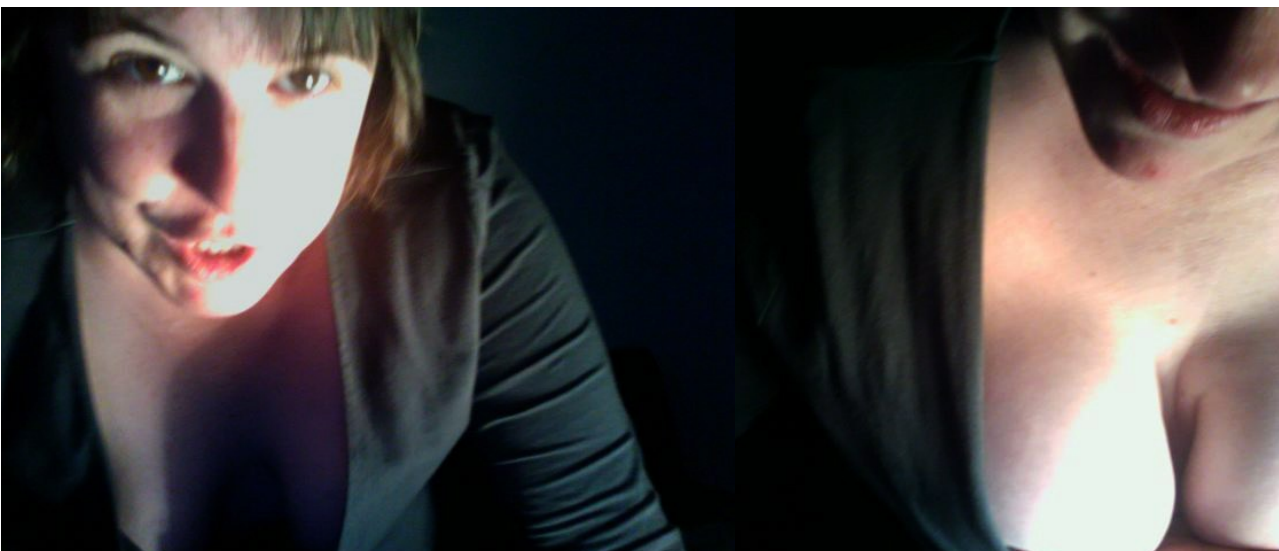
**Performance Season/ Performance-Art Didactic Festival**  
live performance on the web - archive production - interviews and debates  
special web edition 09/10

[versione italiana più in basso](#)  
press release.....

**WEDNESDAY - APRIL 28<sup>th</sup> 2010.....**  
**8.30 PM (GMT + 1).....**  
**LIVE BROADCAST ON [HTTP://WWW.PERFORMANCESEASON.COM/..](http://www.performanceseason.com/)**

**MORE "MORE THAN A MOUTHFUL".....**  
**PERFORMANCE BY SHEILA BISHOP.....**

**BETWEEN CATEGORIES: REENACTMENT / GENDER / THEATER  
PERFORMANCE.....**



Sheila Bishop, *More "More than a Mouthful"*, project 2010

***More "More than a Mouthful"***: What do you get when you mix Emily Dickinson, erotic math puns, crazy mothers, breasts, sexism, sex and gender all together in one big pot? You get *More than a Mouthful*, a piece originally written and performed way back in the early 2000's. What do you get when you re-enact it live and online? *More "More than a Mouthful"*

**Sheila Bishop** is a performer, writer, director, producer, facilitator, presenter, teacher, wanna be video art maker, art house pornographer, nonprofit maven, burnt out activist, Jill of all trades, intellectual, aspiring wensch (mensch with a W) and sassy Southerner. She may be the long lost love child of Ethel Merman, Laurie Anderson and Tallulah Bankhead. <http://www.crookedletter.com>

**Performance Season/ Performance-Art Didactic Festival** is a project by **The Grossi Maglioni Magic Duo** in collaboration with **Vision Forum** and **KSM Linköpings Universitet**, Sweden.

The festival promotes historical/critical/ methodological research on performance art and the exploration and development of **OLP** (on-line performances).

Performance Season will be available on-line, making it possible to participate in the performance program and all festival activities.

The program includes performances and curator interviews in streaming, an on-line archive, participating artists' presentations and discussion forums on performance art themes.

Curators, artists and users can use the festival web channel for debates and for deepen their thought about on-line performance.



performanceseason.com © Copyright 2009-2010 /

more info at <http://www.performanceseason.com/>

contact: [performanceseason@gmail.com](mailto:performanceseason@gmail.com)

project by thegrossimaglionimagicduo

<http://www.thegrossimaglionimagicduo.com>



# PERFORMANCE SEASON

PERFORMANCE ART DIDACTIC FESTIVAL  
SPECIAL WEB EDITION 09/10



The Grossi Maglioni Magic Duo  
in collaborazione con Vision Forum e KSM Linköpings Universitet - Sweden  
presenta

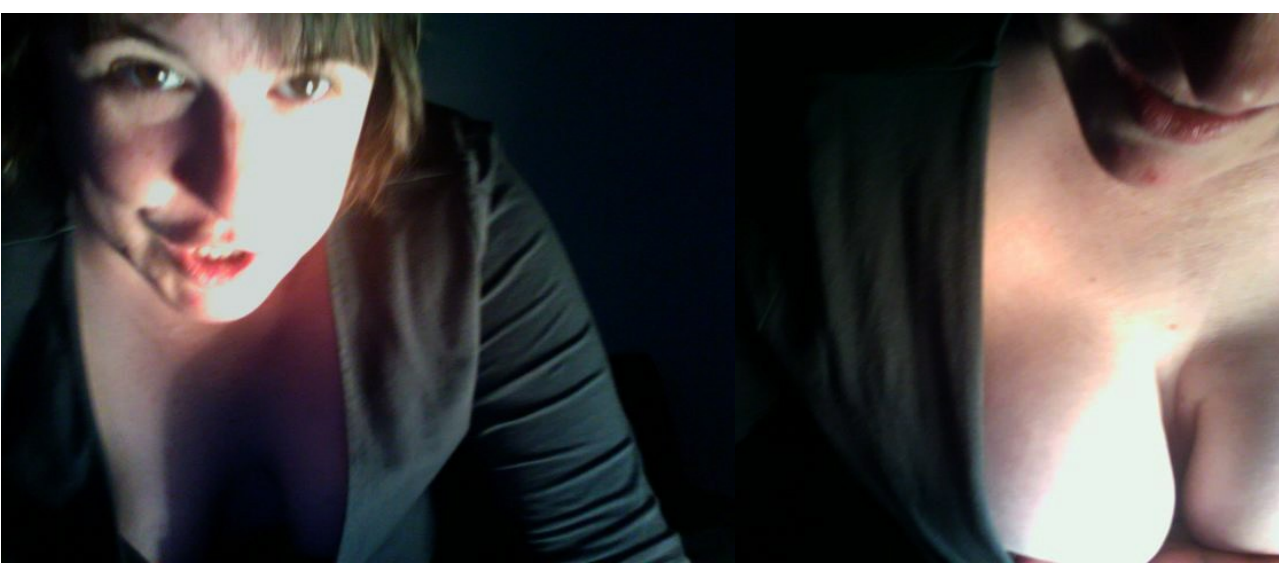
**Performance Season/ Performance-Art Didactic Festival**  
live performance on the web - archive production - interviews and debates  
special web edition 09/10

comunicato stampa.....

**MERCOLEDI - 28 APRILE 2010.....**  
**8.30 PM (GMT + 1).....**  
**LIVE BROADCAST SU [HTTP://WWW.PERFORMANCESEASON.COM/...](http://www.performanceseason.com/)**

**MORE "MORE THAN A MOUTHFUL".....**  
**PERFORMANCE DI SHEILA BISHOP.....**

**TRA LE CATEGORIE: REENACTMENT / GENDER / THEATER  
PERFORMANCE.....**



Sheila Bishop, *More "More than a Mouthful"*, project 2010

**More 'More than a Mouthful':** che cosa si ottiene quando si mischia Emily Dickinson, giochi di parole matematici erotici, madri folli, seni, sessismo, sesso e gender tutti insieme in un grande piatto? ottieni *More than a Mouthful*, u npezzo originariamente scritto e performato indietro nei primi 2000. cosa si ottiene quando lo re-enact live e online? *More "More than a Mouthful"*

**Sheila Bishop** è una performer, scrittrice, regista, produttrice, moderatrice, presentatrice, insegnante, vuole essere una video-artista, 'art house pornographer', una 'maven noproft', un'attivista sfinita, una 'Jill of all trades', un'intellettuale, una aspirante 'wensch' (una 'mensch' con la W) e una sfacciata meridionale.

Potrebbe essere la figlia illegittima di Ethel Merman, Laurie Anderson e Tallulah Bankhead.

<http://www.crookedletter.com/>

**Performance Season/ Performance-Art Didactic Festival** è un progetto del **The Grossi Maglioni Magic Duo** in collaborazione con **Vision Forum** e **KSM Linköpings Universitet**, Svezia.

Il festival promuove la ricerca storico/critica/metodologica sulla performance art ed in particolare l'esplorazione e lo sviluppo della **OLP** (on-line performance).

Performance Season si svolgerà interamente sul sito internet da cui sarà possibile seguire le performance e tutte le attività del festival.

Il programma include oltre le performance e le interviste ai curatori in streaming, un archivio consultabile on-line, presentazione degli artisti partecipanti e forum di discussione sui temi della performance art.

Curatori, artisti e utenti possono usare il canale del festival per discutere e approfondire il loro pensiero sulla performance on-line.



performancesession.com © Copyright 2009-2010 /

more info at <http://www.performancesession.com/>

contact: [performancesession@gmail.com](mailto:performancesession@gmail.com)

project by thegrossimaglionimagicduo

<http://www.thegrossimaglionimagicduo.com>

